

# THINKWARE DASH CAM™

## Quick Start Guide

# U3000

## Power the Dash Cam

### Use one of the following options

The included cable options vary depending on the dash cam model purchased.



12V Power Cable



Hardwiring Cable\*



OBD-II Cable\*



\*To enable Parking Surveillance mode, the dash cam needs to be powered by either the OBD-II Cable or Hardwiring Cable (professional installation recommended).

## Download the App

### Download the THINKWARE DASHCAM LINK App

On your smartphone, open the Google Play Store or Apple App Store and download and install THINKWARE DASH CAM LINK.



THINKWARE  
DASH CAM LINK



Apple Store (iOS)



Google Play Store (Android)

## Connect to the App

### Connect the product to a smartphone

Tap Dash cam connection is required. At the bottom of the screen and follow the on-screen instructions to connect the product to a smartphone.

1. Press the Wi-Fi button on the Dash Cam for at least 3 seconds.



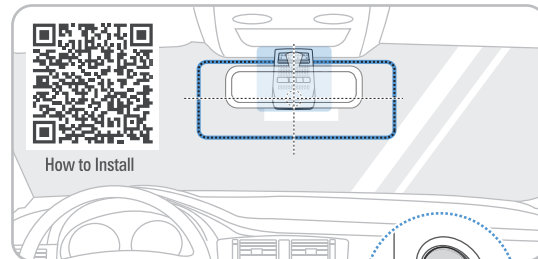
Wi-Fi LED  
Blue flickers

Hold for more  
than 3 sec

Won't connect to the App?



## Install the Front Camera

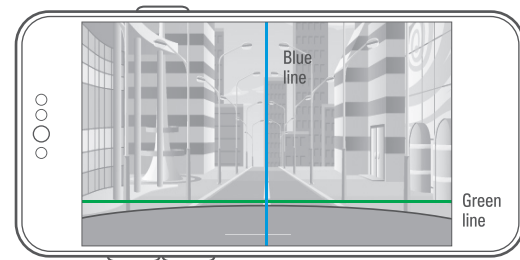


How to Install



### Open Live View in the app

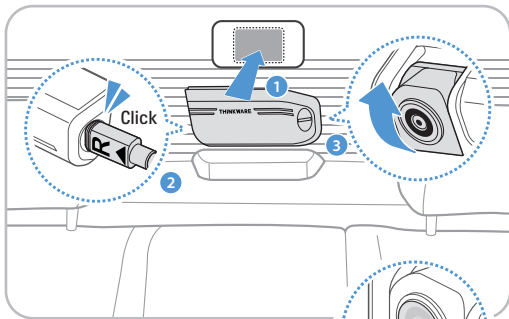
- Blue line with the center
- Green line with the front edge of the hood



Blue  
line

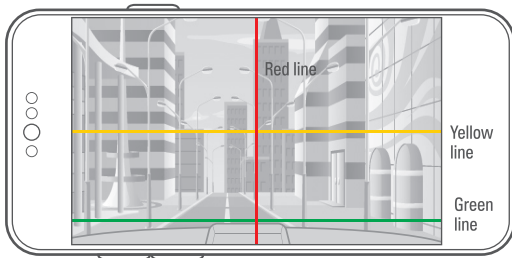
Green  
line

## Install the Rear View Camera



### Open Live View Rear Camera in App

- Red line with the trunk center
- Yellow line with the center of the horizon
- Green line with the trunk line



## Dash Cam Settings in the App

### Default settings out of the box

The default settings are as follows, and you have the option to adjust them according to your preference.

Options	Description
Voice Recording	Enabled
System Volume	0 1 2 3
Parking Mode	<b>RADAR</b>
Smart Parking Mode	Thermal Protection - Enabled
	External Battery Saving - <b>Enabled</b>
Battery Protection	Enabled Vehicle Type : Regular
Super Night Vision	Parking Mode
ADAS	Disabled
Speed Stamp	Disabled
Safety Camera	Enabled
Use External Battery	Disabled

ACMA-027PAM301

## THINKWARE CONNECTED App

### Still have questions or issues?

The default settings are as follows, and you can change the settings.



THINKWARE CONNECTED



How to Register  
Your Dash Cam



Apple Store (iOS)



Google Play Store (Android)

## FAQ & Help Desk

### Still have questions or issues?

For further assistance or to report any issues, please contact our support team.

- **North America**  
1 (844) 865-9273  
support@thinkware.com
- **United Kingdom**  
44 (0) 333-121-0008  
support.eu@thinkware.com
- **European Union**  
(+49) 69-943-22200  
support@thinkware.com



FAQs & Help Desk

Please refer to CS Information QR in the box for other countries.